

# Embedded Technosolutions

Venture of IIT Bombay & VJTI Alumni

Embedded Systems | Software | Mechanical | Automation

Trainings & Jobs

**100%** Placement Assistance

Contact : 8828222688 / 9224301650

[www.embeddedtechnosolutions.com](http://www.embeddedtechnosolutions.com)



**Industrial Certified**  
Professional Artificial Intelligence

**We Are India's one of the Leading Trainings &  
Jobs Providing Organization**



कौशल भारत - कुशल भारत



# Embedded Technosolutions

Venture of IIT Bombay & VJTI Alumni

Embedded Systems | Software | Mechanical | Automation

Trainings & Jobs

100% Placement Assistance

Contact : 8828222688 / 9224301650

[www.embeddedtechnosolutions.com](http://www.embeddedtechnosolutions.com)



<b>उद्योग आधार</b> <b>Udyog Aadhaar</b>																			
<b>E</b>	<table border="1"> <tr> <td>Type of Enterprise</td> <td>Micro</td> <td>Small</td> <td>Medium</td> </tr> <tr> <td>Manufacturing</td> <td>A</td> <td>B</td> <td>C</td> </tr> <tr> <td>Services</td> <td>D</td> <td>E</td> <td>F</td> </tr> <tr> <td>UAN</td> <td colspan="3" style="text-align: center;"><b>MH19E0006383</b></td> </tr> </table>	Type of Enterprise	Micro	Small	Medium	Manufacturing	A	B	C	Services	D	E	F	UAN	<b>MH19E0006383</b>				
Type of Enterprise	Micro	Small	Medium																
Manufacturing	A	B	C																
Services	D	E	F																
UAN	<b>MH19E0006383</b>																		
<b>Government of India (MSME)</b>																			
<b>Name of Enterprise :</b> Embedded Technosolutions																			
<b>Type of Organisation</b> Proprietary																			
<b>Postal Address</b> Shop No.C/20,1st Floor ,Amrita Sadan, Near Hotel Dwarka, Nerul West, District - Mumbai City, State - Maharashtra, 400706																			
<b>Email</b> info@embeddedtechnosolutions.com																			
<b>Majority Activity</b> Services																			
<b>District Industry Centre</b> Mumbai City		<b>UAN</b> MH19E0006383																	

**Government of India (MSME) & ISO 9001-2015**  
**Approved Organisation**  
**Running by IIT Bombay & VJTI Alumni**



# Embedded Technosolutions

Venture of IIT Bombay & VJTI Alumni

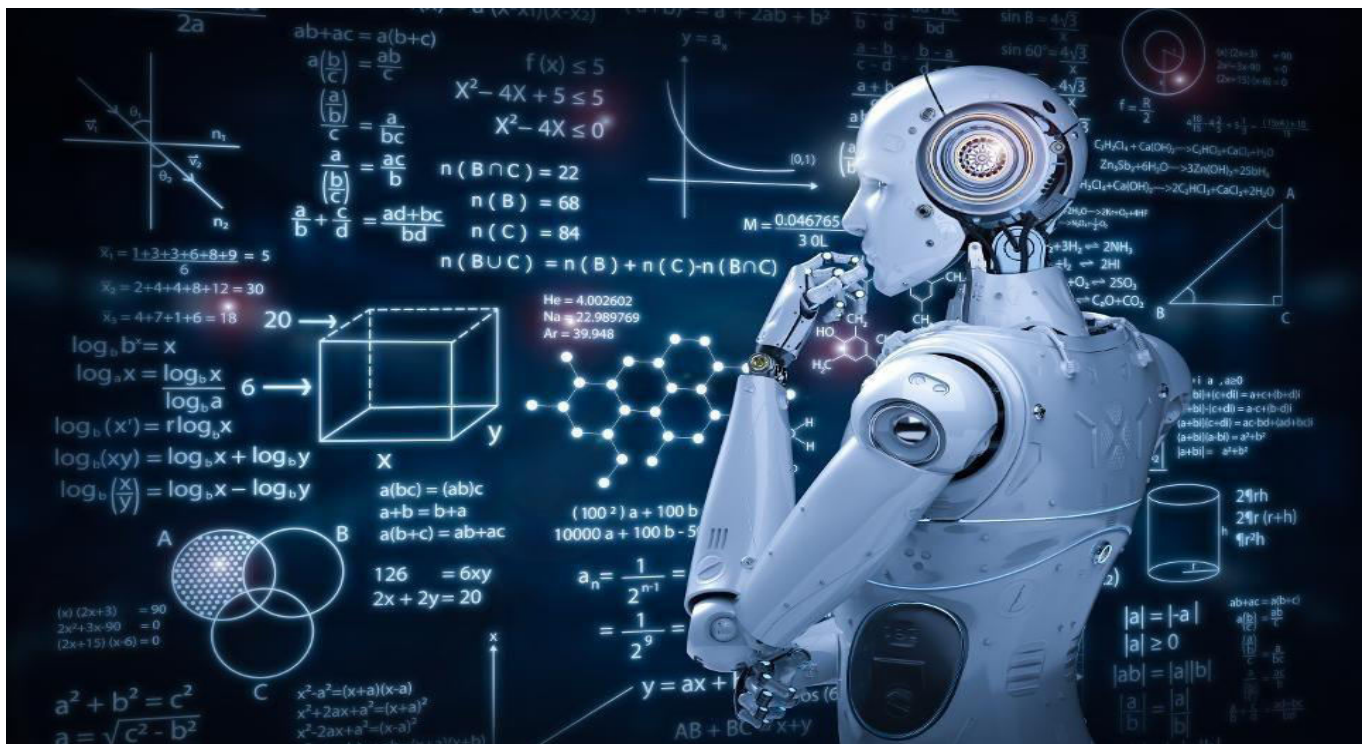
Embedded Systems | Software | Mechanical | Automation

Trainings & Jobs

100% Placement Assistance

Contact : 8828222688 / 9224301650

[www.embeddedtechnosolutions.com](http://www.embeddedtechnosolutions.com)



**Embedded Technosolutions** is a Professional & Corporate Training Institute & a Company which Working for Indian MNCs & Medium/Small Scale Industries in Product R&D, Development, Manufacturing & Customization.

Our training sessions are purely practical based on industrial standards



# Embedded Technosolutions

Venture of IIT Bombay & VJTI Alumni

Embedded Systems | Software | Mechanical | Automation

Trainings & Jobs

100% Placement Assistance

Contact : 8828222688 / 9224301650

[www.embeddedtechnosolutions.com](http://www.embeddedtechnosolutions.com)



---

## Till Now We Worked for the following Industries

- Crompton Greaves Ltd, Mumbai
- Laboratory Corporation of America, LabCorp, Burlington, NC USA
- Netfinity, India
- Continental Grain Corporation
- Brook Furniture Rental, Chicago, IL
- ITA, Bangalore
- RAK Ceramics, Mumbai
- Nvidia, Pune
- ARORA, Mumbai
- RED Cell, Mumbai
- Secutech, Mumbai



# Embedded Technosolutions

Venture of IIT Bombay & VJTI Alumni

Embedded Systems | Software | Mechanical | Automation

Trainings & Jobs

**100%** Placement Assistance

Contact : 8828222688 / 9224301650

[www.embeddedtechnosolutions.com](http://www.embeddedtechnosolutions.com)



Professional

ARTIFICIAL INTELLIGENCE

## Chapter 1 : Notebook Basic

- Types of cells
- Creating cells
- Running cells
- Editing cells
- Moving cells
- Deleting cells
- Creating a code cell



# Embedded Technosolutions

Venture of IIT Bombay & VJTI Alumni

Embedded Systems | Software | Mechanical | Automation

Trainings & Jobs

**100%** Placement Assistance

Contact : 8828222688 / 9224301650

[www.embeddedtechnosolutions.com](http://www.embeddedtechnosolutions.com)



- Saving the notebook

## Chapter 2 : Python

- Variables
- Lists
- Tuple
- Dictionary
- If statements
- Loops
- Functions
- Classes

## Chapter 3 : NumPy

- NumPy basics
- Indexing
- Array math Advanced



# Embedded Technosolutions

Venture of IIT Bombay & VJTI Alumni

Embedded Systems | Software | Mechanical | Automation

Trainings & Jobs

100% Placement Assistance

Contact : 8828222688 / 9224301650

[www.embeddedtechnosolutions.com](http://www.embeddedtechnosolutions.com)



---

## Chapter 4 : Pandas

- Uploading the data
- Loading the data
- Exploratory analysis
- Preprocessing
- Feature engineering
- Saving data

## Chapter 5 : Linear Regression

- Overview
- Training
- Data
- Scikit-learn implementation
- Evaluation
- Inference
- Interpretability
- Proof for unstandardizing coefficients



# Embedded Technosolutions

Venture of IIT Bombay & VJTI Alumni

Embedded Systems | Software | Mechanical | Automation

Trainings & Jobs

**100%** Placement Assistance

Contact : 8828222688 / 9224301650

[www.embeddedtechnosolutions.com](http://www.embeddedtechnosolutions.com)



- Regularization
- Categorical
- variables

## Chapter 6 : Logistic Regression

- Overview
- Training
- Data,
- Scikit-learn implementation
- Evaluation metrics
- Inference
- Interpretability
- Proof for unstandardizing coefficients:
- K-fold cross validation





# Embedded Technosolutions

Venture of IIT Bombay & VJTI Alumni

Embedded Systems | Software | Mechanical | Automation

Trainings & Jobs

**100%** Placement Assistance

Contact : 8828222688 / 9224301650

[www.embeddedtechnosolutions.com](http://www.embeddedtechnosolutions.com)



---

## Chapter 7 : Random Forests

- Overview
- Training
- Data
- Scikit-learn implementation
- Evaluation-Interpretability
- Random forests,
- Scikit-learn implementation-
- Grid Search

## Chapter 8 : PyTorch

- Tensor basics
- Tensor operations
- Indexing, Splicing and Joining
- Gradients
- CUDA tensors



# Embedded Technosolutions

Venture of IIT Bombay & VJTI Alumni

Embedded Systems | Software | Mechanical | Automation

Trainings & Jobs

**100%** Placement Assistance

Contact : 8828222688 / 9224301650

[www.embeddedtechnosolutions.com](http://www.embeddedtechnosolutions.com)



---

## Chapter 9 : Multilayer Perceptron

- Overview
- Training
- Data
- Linear model
- Non-linear model
- Visualizing weights
- Activation functions
- Initializing weights
- Over fitting
- Dropout

## Chapter 10 : Data & Models

- Set Up
- Data
- Model



# Embedded Technosolutions

Venture of IIT Bombay & VJTI Alumni

Embedded Systems | Software | Mechanical | Automation

Trainings & Jobs

**100%** Placement Assistance

Contact : 8828222688 / 9224301650

[www.embeddedtechnosolutions.com](http://www.embeddedtechnosolutions.com)



- Data Quality and Quantity
- Models

## Chapter 11 : Object Oriented ML

- Overview
- Configuration
- Set up
- Components
- Load data-Components, Operations
- Split data-Components, Operations, Preprocessing
- Components
- Operations
- Vocabulary
- Components
- Operations
- Vectorizer



# Embedded Technosolutions

Venture of IIT Bombay & VJTI Alumni

Embedded Systems | Software | Mechanical | Automation

Trainings & Jobs

100% Placement Assistance

Contact : 8828222688 / 9224301650

[www.embeddedtechnosolutions.com](http://www.embeddedtechnosolutions.com)



- Components
- Operations
- Dataset
- Components
- Operations
- Model
- Components
- Operations
- Training
- Components
- Operations
- Inference
- Components
- Operations



# Embedded Technosolutions

Venture of IIT Bombay & VJTI Alumni

Embedded Systems | Software | Mechanical | Automation

Trainings & Jobs

**100%** Placement Assistance

Contact : 8828222688 / 9224301650

[www.embeddedtechnosolutions.com](http://www.embeddedtechnosolutions.com)



---

## Chapter 12 : Convolution Neural Networks\

- Overview
- Filters
- Pooling
- CNNs on text
- Set up
- Data
- Vocabulary
- Vectorizer
- Dataset
- Model
- Training
- Inference
- Batch normalization



# Embedded Technosolutions

Venture of IIT Bombay & VJTI Alumni

Embedded Systems | Software | Mechanical | Automation

Trainings & Jobs

**100%** Placement Assistance

Contact : 8828222688 / 9224301650

[www.embeddedtechnosolutions.com](http://www.embeddedtechnosolutions.com)



---

## Chapter 13 : Embeddings

- Overview
- Pretrained embeddings
- Using Embeddings
- Set up
- Data
- Vocabulary
- Sequence vocabulary
- Vectorizer
- Dataset
- Model
- Training
- Using GloVe embeddings
- Freeze embeddings



# Embedded Technosolutions

Venture of IIT Bombay & VJTI Alumni

Embedded Systems | Software | Mechanical | Automation

Trainings & Jobs

**100%** Placement Assistance

Contact : 8828222688 / 9224301650

[www.embeddedtechnosolutions.com](http://www.embeddedtechnosolutions.com)



---

## Chapter 14 : Recurrent Neural Networks

- Overview
- Sequential data
- Issues with vanilla RNNs
- Bidirectional RNNs
- Document classification with RNNs
- Set up
- Data
- Vocabulary
- Sequence vocabulary
- Vectorizer
- Dataset
- Model
- Training
- Inference



# Embedded Technosolutions

Venture of IIT Bombay & VJTI Alumni

Embedded Systems | Software | Mechanical | Automation

Trainings & Jobs

**100%** Placement Assistance

Contact : 8828222688 / 9224301650

[www.embeddedtechnosolutions.com](http://www.embeddedtechnosolutions.com)



---

## Chapter 15 : Advanced RNNs

- Set up
- Conditioned RNNs
- Char-level embeddings
- Encoder and decoder
- Attentional mechanisms
- Document classification with RNNs
- Set up
- Data
- Vocabulary
- Sequence vocabulary
- Vectorizer
- Dataset
- Model
- Training
- Inference





# Embedded Technosolutions

Venture of IIT Bombay & VJTI Alumni

Embedded Systems | Software | Mechanical | Automation

Trainings & Jobs

**100%** Placement Assistance

Contact : 8828222688 / 9224301650

[www.embeddedtechnosolutions.com](http://www.embeddedtechnosolutions.com)



- Interpretability
- Layer normalization

## **Chapter 16** : Computer Vision

- Set up
- Components
- Operations
- Load data
- Components
- Operations
- Split data
- Components
- Operations
- Vocabulary
- Components
- Operations



# Embedded Technosolutions

Venture of IIT Bombay & VJTI Alumni

Embedded Systems | Software | Mechanical | Automation

Trainings & Jobs

**100%** Placement Assistance

Contact : 8828222688 / 9224301650

[www.embeddedtechnosolutions.com](http://www.embeddedtechnosolutions.com)



- Sequence vocabulary
- Components
- Operations
- Vectorizer
- Components
- Operations
- Dataset
- Components
- Operations
- Model
- Components
- Operations
- Training
- Components
- Operations
- Transfer learning



# Embedded Technosolutions

Venture of IIT Bombay & VJTI Alumni

Embedded Systems | Software | Mechanical | Automation

Trainings & Jobs

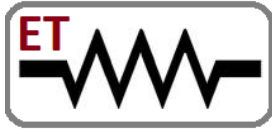
**100%** Placement Assistance

Contact : 8828222688 / 9224301650

[www.embeddedtechnosolutions.com](http://www.embeddedtechnosolutions.com)



- 
- Components
  - Operations
  - Inference
  - Components
  - Operations



# Embedded Technosolutions

Venture of IIT Bombay & VJTI Alumni

Embedded Systems | Software | Mechanical | Automation

Trainings & Jobs

**100%** Placement Assistance

Contact : 8828222688 / 9224301650

[www.embeddedtechnosolutions.com](http://www.embeddedtechnosolutions.com)



## Placement Policy

- As we are working for industries for their product development, R&D, Customization & Manufacturing we get direct recruitment related notification from that companies whenever there is the recruitment in the that companies.
- Also other companies in the market they also call us regarding recruitment process.

These entire JOB related notifications we exclusively provide to our students and they can apply in that companies directly. We upload the password protected job notifications on our website, students can access that job notifications from our website with password.